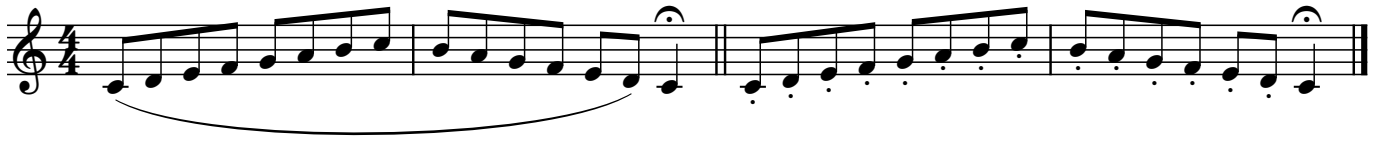
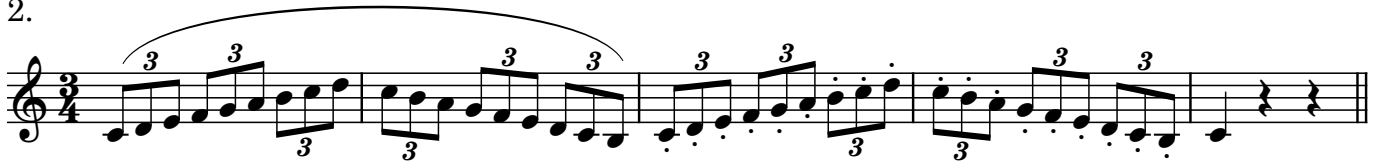


C-Dur - C Major

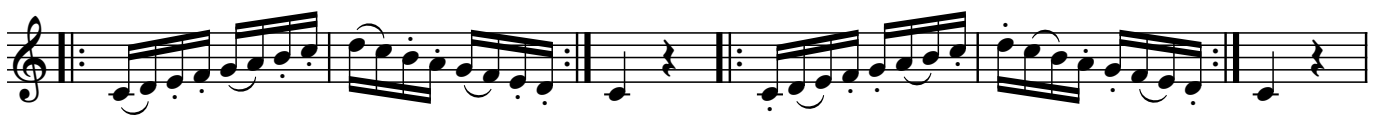
1.



2.

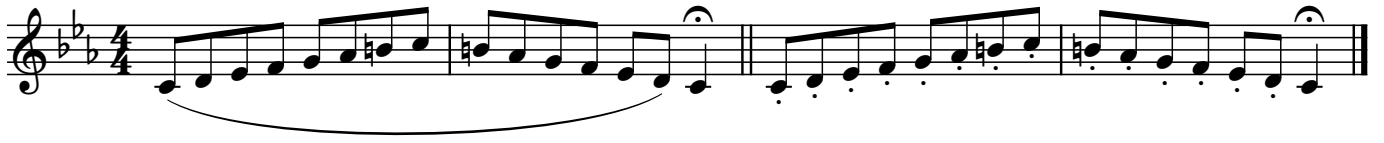


3.



c-moll - c minor

1.



2.

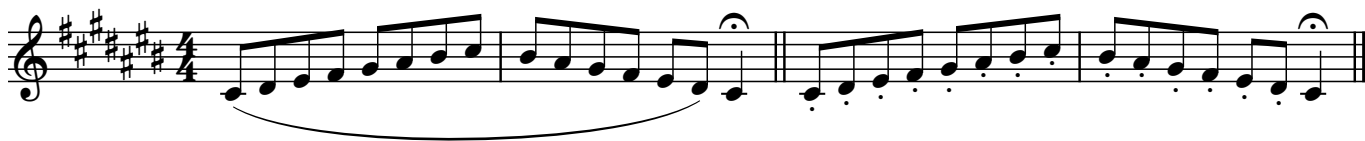


3.

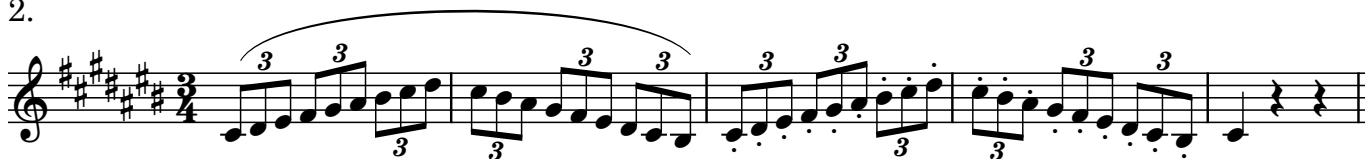


Cis-Dur - C# Major

1.



2.

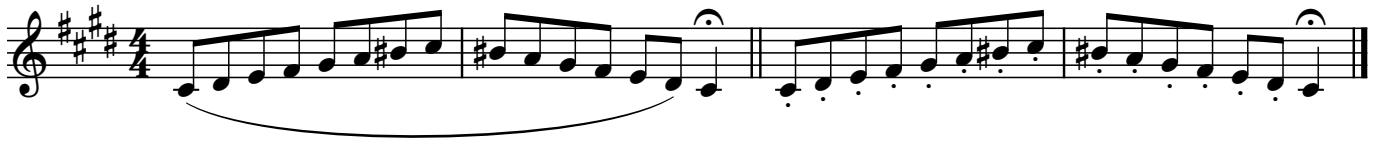


3.

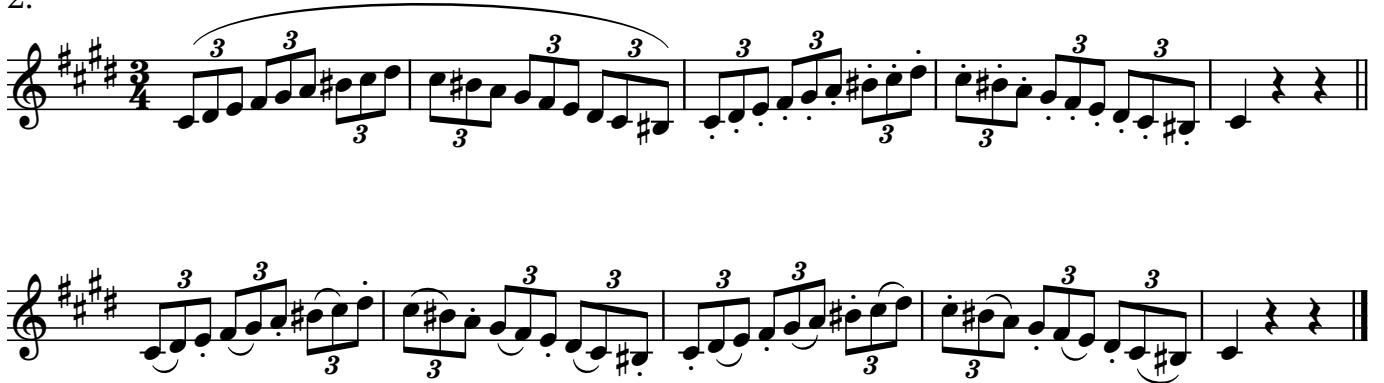


cis-moll - c# minor

1.



2.



3.



D-Dur - D Major

1.

Musical notation for exercise 1, D major, 4/4 time signature. The exercise consists of two measures. The first measure contains a melodic line starting on D4, moving up stepwise to A4, then down stepwise to D4, with a slur over the entire phrase. The second measure contains a similar melodic line, also starting on D4 and moving up to A4, then down to D4, with a slur over the phrase.

2.

Musical notation for exercise 2, D major, 3/4 time signature. The exercise consists of two measures. The first measure contains a melodic line starting on D4, moving up stepwise to A4, then down stepwise to D4, with a slur over the phrase. The second measure contains a similar melodic line, also starting on D4 and moving up to A4, then down to D4, with a slur over the phrase.

Musical notation for exercise 2, D major, 3/4 time signature. This line continues the exercise with two measures. The first measure contains a melodic line starting on D4, moving up stepwise to A4, then down stepwise to D4, with a slur over the phrase. The second measure contains a similar melodic line, also starting on D4 and moving up to A4, then down to D4, with a slur over the phrase.

3.

Musical notation for exercise 3, D major, 2/4 time signature. The exercise consists of two measures. The first measure contains a melodic line starting on D4, moving up stepwise to A4, then down stepwise to D4, with a slur over the phrase. The second measure contains a similar melodic line, also starting on D4 and moving up to A4, then down to D4, with a slur over the phrase.

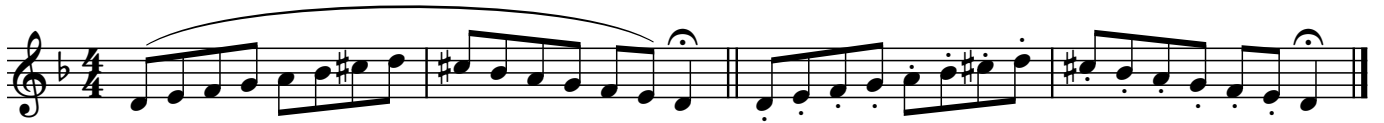
Musical notation for exercise 3, D major, 2/4 time signature. This line continues the exercise with two measures. The first measure contains a melodic line starting on D4, moving up stepwise to A4, then down stepwise to D4, with a slur over the phrase. The second measure contains a similar melodic line, also starting on D4 and moving up to A4, then down to D4, with a slur over the phrase.

Musical notation for exercise 3, D major, 2/4 time signature. This line continues the exercise with two measures. The first measure contains a melodic line starting on D4, moving up stepwise to A4, then down stepwise to D4, with a slur over the phrase. The second measure contains a similar melodic line, also starting on D4 and moving up to A4, then down to D4, with a slur over the phrase.

Musical notation for exercise 3, D major, 2/4 time signature. This line continues the exercise with two measures. The first measure contains a melodic line starting on D4, moving up stepwise to A4, then down stepwise to D4, with a slur over the phrase. The second measure contains a similar melodic line, also starting on D4 and moving up to A4, then down to D4, with a slur over the phrase.

d-moll - d minor

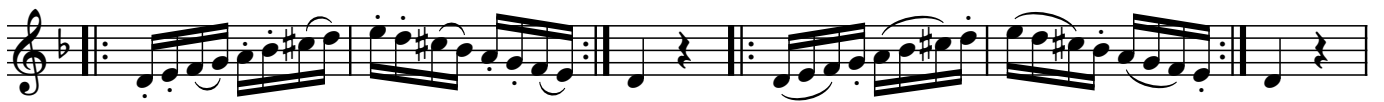
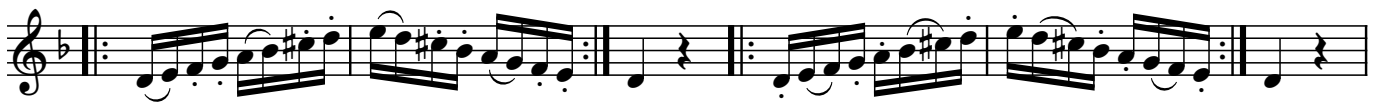
1.



2.

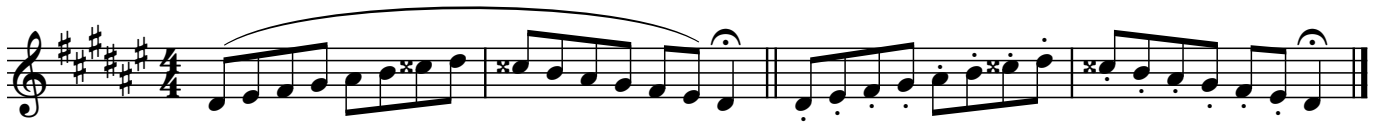


3.



dis-moll - d# minor

1.



2.

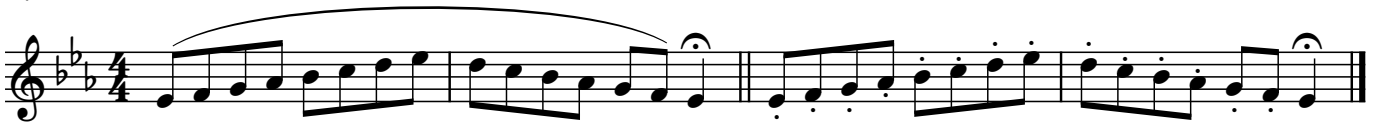


3.



Es-Dur - E \flat Major

1.



2.

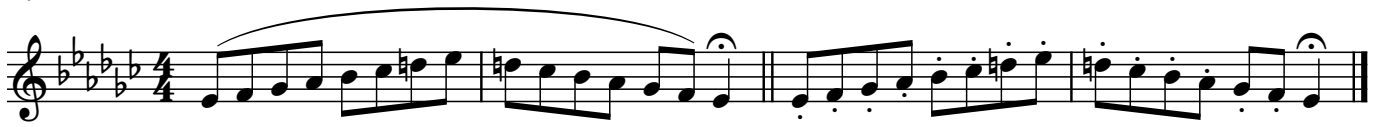


3.



es-moll - e \flat minor

1.



2.

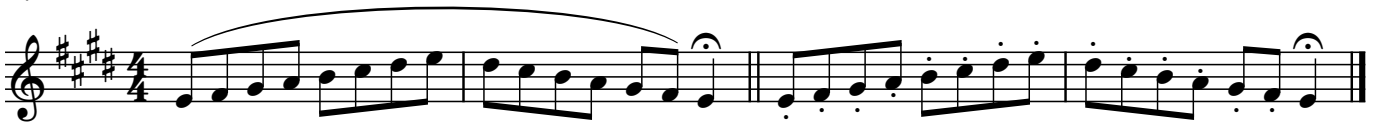


3.

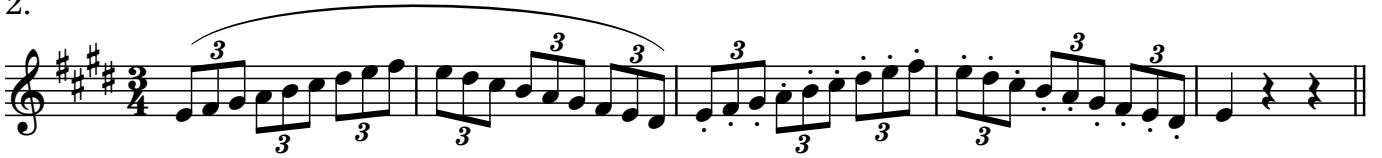


E-Dur - E Major

1.



2.

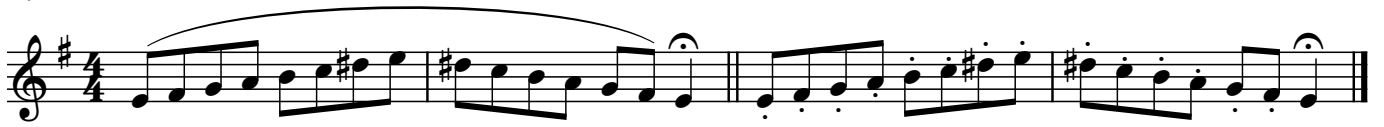


3.



e-moll - e minor

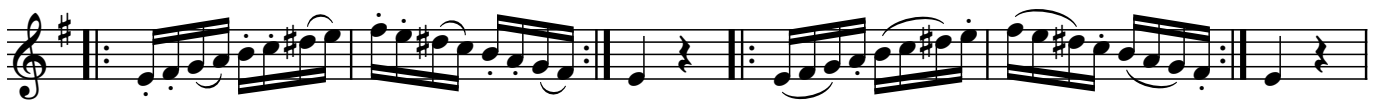
1.



2.



3.

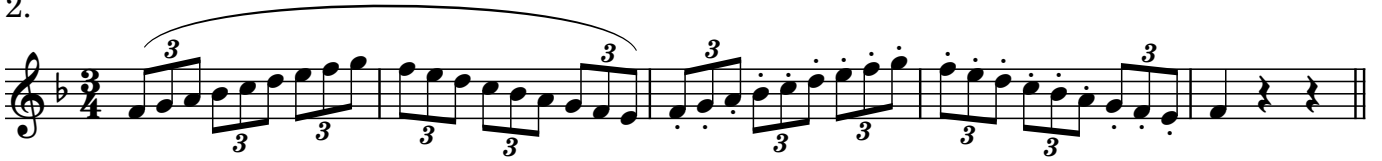


F-Dur - F Major

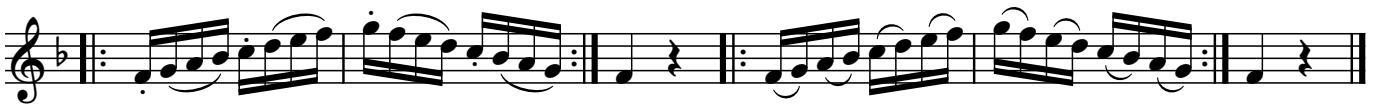
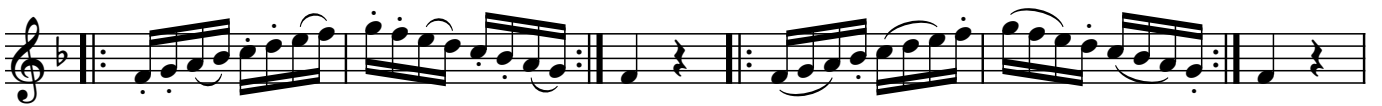
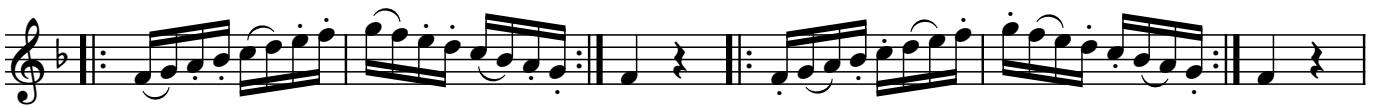
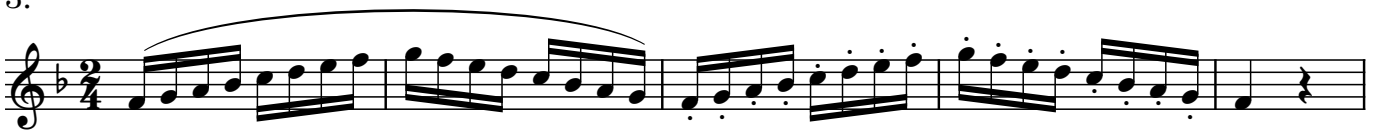
1.



2.

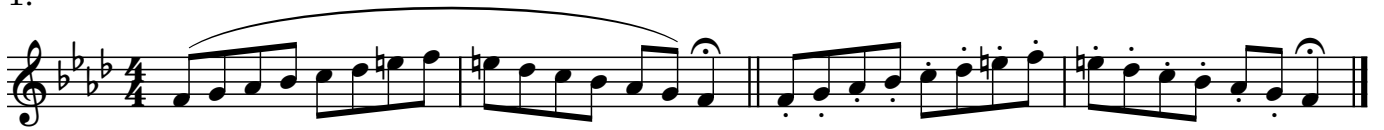


3.



f-moll - f minor

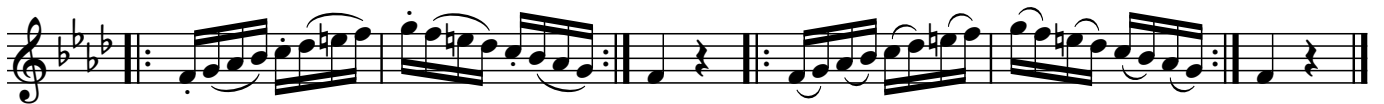
1.



2.



3.

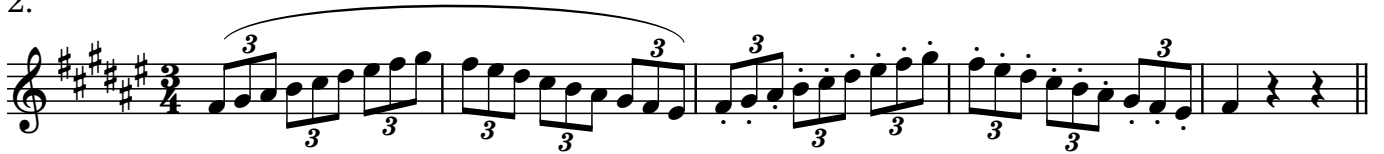


Fis-Dur - F# Major

1.



2.

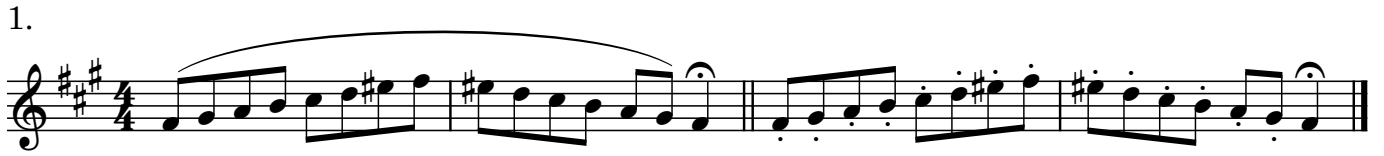


3.

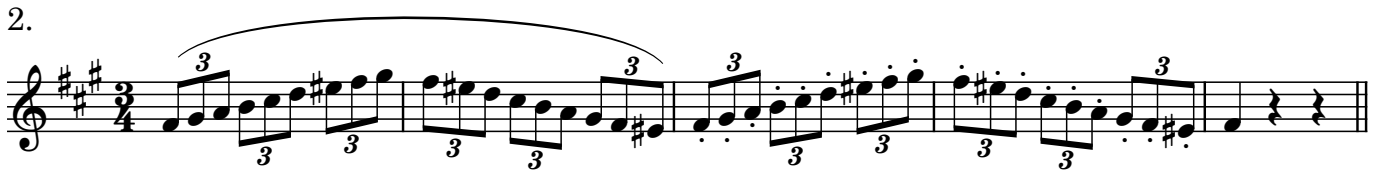


fis-moll - f# minor

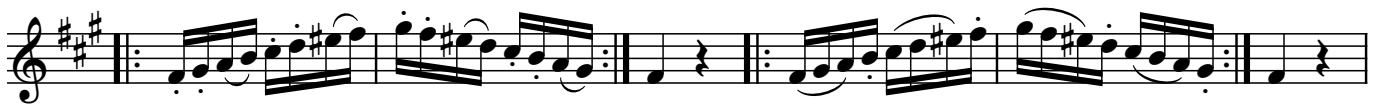
1.



2.



3.

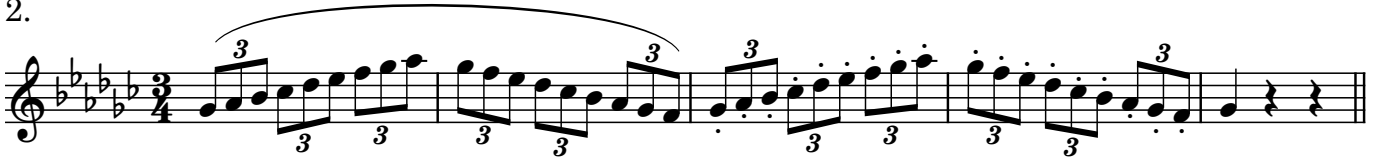


Ges-Dur - G \flat Major

1.



2.

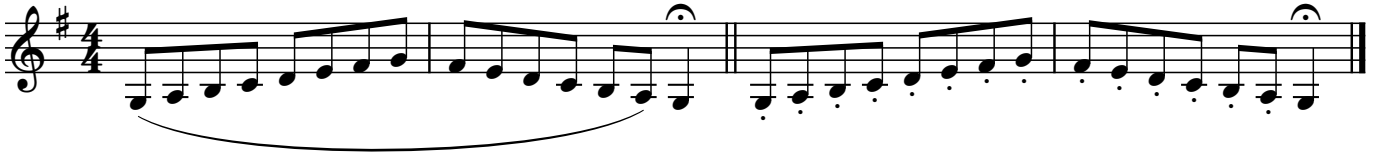


3.

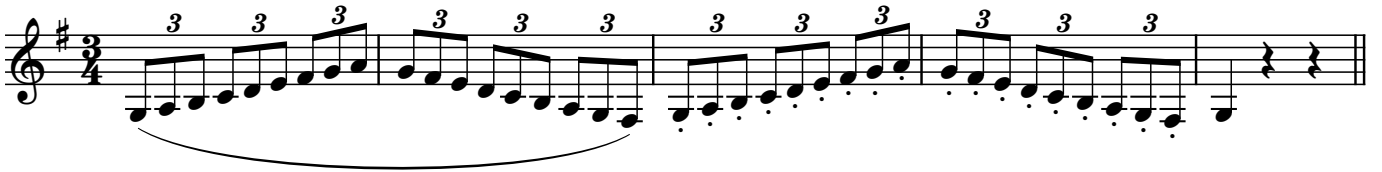


G-Dur - G Major

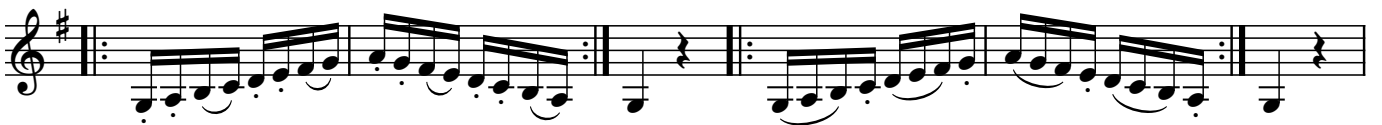
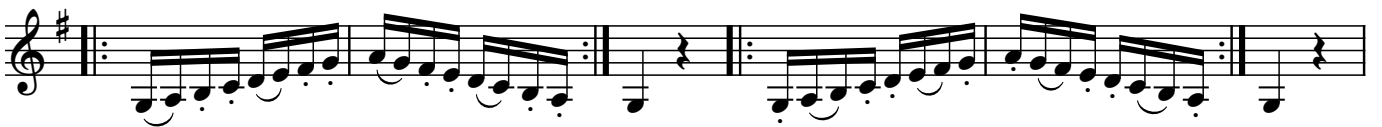
1.



2.

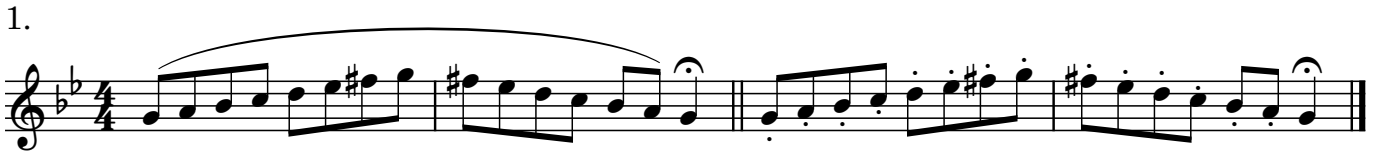


3.



g-moll - g minor


1.



2.

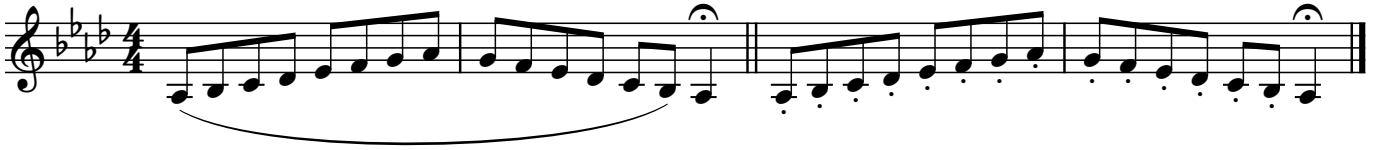


3.

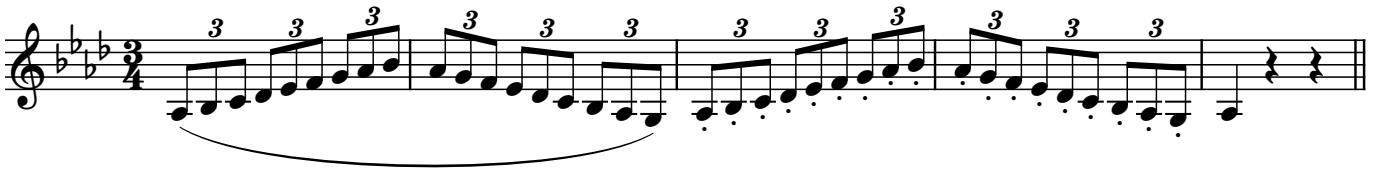


As-Dur - A \flat Major

1.



2.

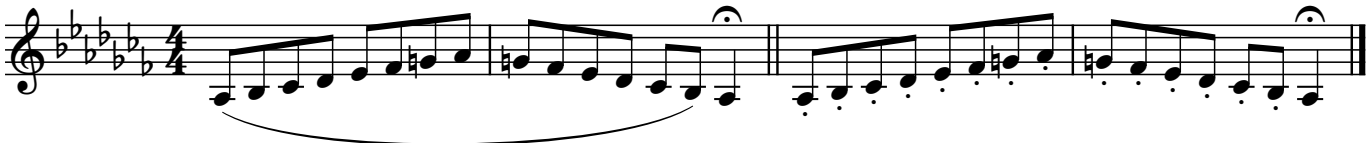


3.



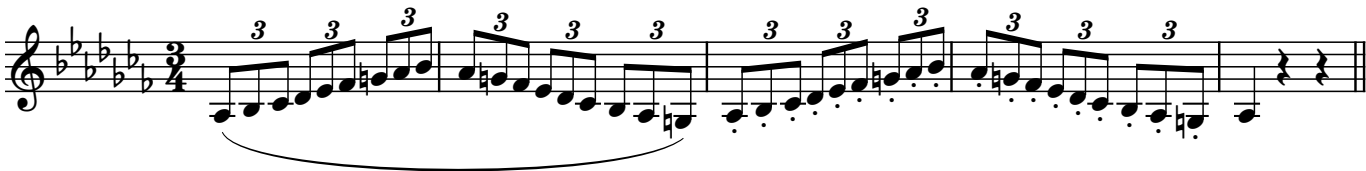
as-moll - a \flat minor

1.



Musical notation for exercise 1, featuring a single staff in 4/4 time with a key signature of three flats. The melody consists of eighth notes and quarter notes, with a slur under the first four measures and a fermata over the final note of the second measure.

2.



Musical notation for exercise 2, first line, featuring a single staff in 3/4 time with a key signature of three flats. The melody consists of eighth notes and quarter notes, with a slur under the first four measures and a fermata over the final note of the second measure. Triplet markings are present above the eighth notes.



Musical notation for exercise 2, second line, featuring a single staff in 3/4 time with a key signature of three flats. The melody consists of eighth notes and quarter notes, with a slur under the first four measures and a fermata over the final note of the second measure. Triplet markings are present above the eighth notes.

3.



Musical notation for exercise 3, first line, featuring a single staff in 2/4 time with a key signature of three flats. The melody consists of eighth notes and quarter notes, with a slur under the first four measures and a fermata over the final note of the second measure.



Musical notation for exercise 3, second line, featuring a single staff in 2/4 time with a key signature of three flats. The melody consists of eighth notes and quarter notes, with a slur under the first four measures and a fermata over the final note of the second measure.



Musical notation for exercise 3, third line, featuring a single staff in 2/4 time with a key signature of three flats. The melody consists of eighth notes and quarter notes, with a slur under the first four measures and a fermata over the final note of the second measure.



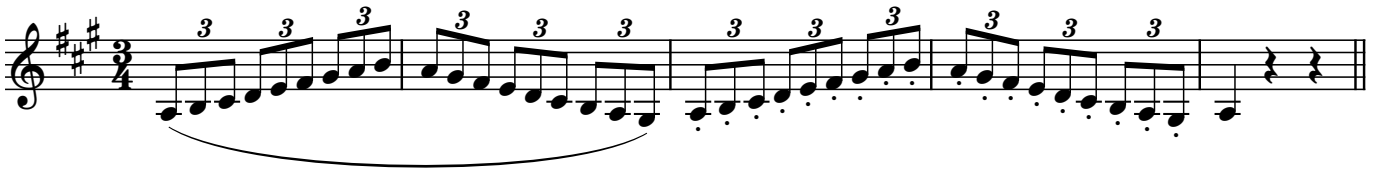
Musical notation for exercise 3, fourth line, featuring a single staff in 2/4 time with a key signature of three flats. The melody consists of eighth notes and quarter notes, with a slur under the first four measures and a fermata over the final note of the second measure.

A-Dur - A Major

1.



2.

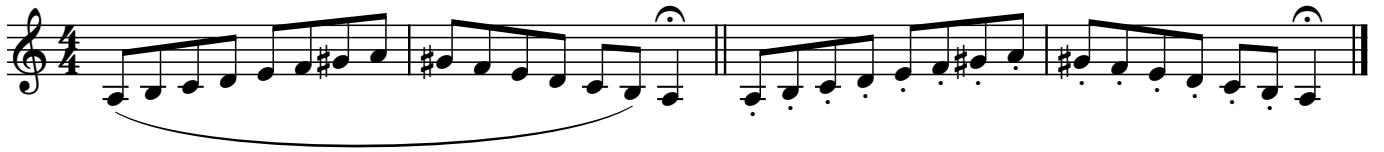


3.



a-moll - a minor

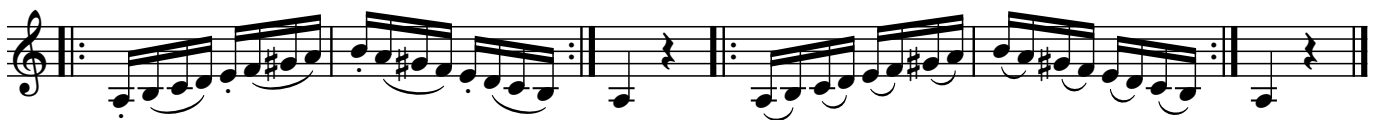
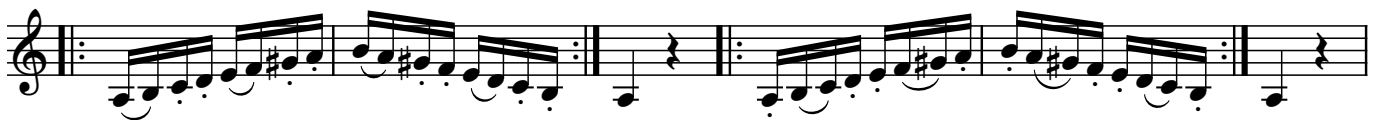
1.



2.



3.



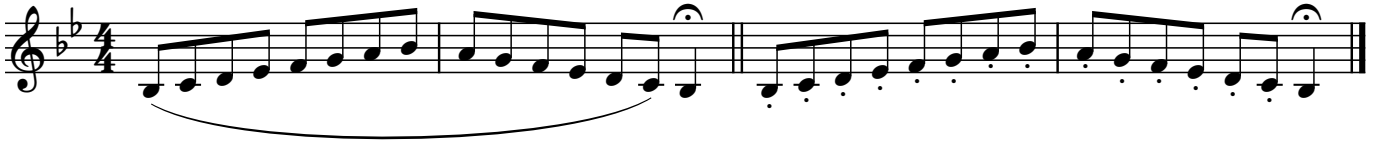
ais-moll - a# minor

1.



B-Dur - B \flat Major

1.



2.

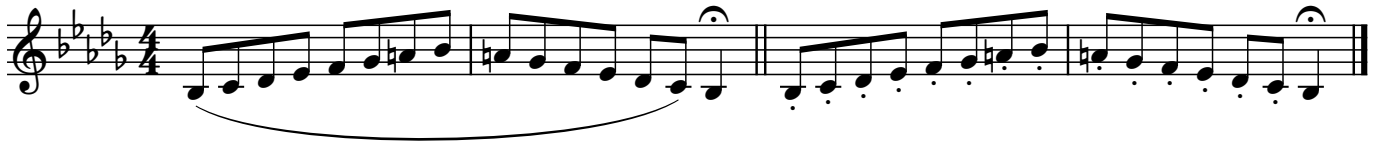


3.



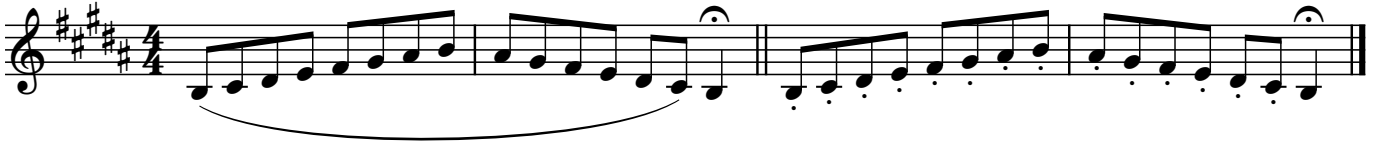
b-moll - b \flat minor

1.



H-Dur - B Major

1.



2.

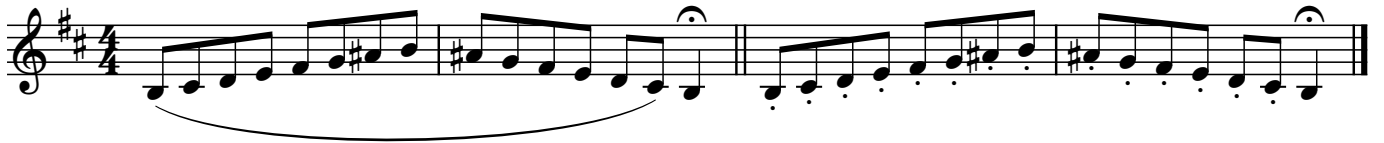


3.



h-moll - b minor

1.



2.

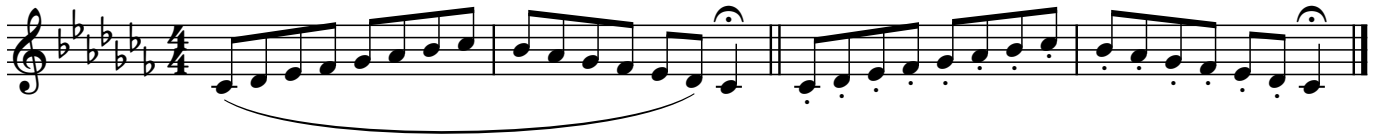


3.



Ces-Dur - C \flat Major

1.



2.



3.

